

內容 Content

安裝後之檢查.....	1
Inspection after installation	
配件.....	2
Accessories	
安全指示.....	3
Safety Instructions	
安裝注意事項.....	8
Cautions for Installation	
尺寸.....	11
Dimensions	
熱水爐安裝.....	12
Heater Installation	
安裝範例.....	14
Example of Installation	
測試操作.....	15
Trial Operation	
規格.....	16
Specifications	

Disclaimer

免責聲明

Please read this user manual carefully before installing, operating or servicing the
請在安裝前，仔細閱讀本手冊。

Please keep this manual for further reference.

請妥善保存此手冊，以備日後參考。

型號 MODEL

Giw-218S(TG).....For H.K.Town Gas 適用於香港煤氣

適用於香港

注意！根據香港氣體安全條例，任何氣體裝置工程，包括爐具和接駁喉管的安裝，必須由註冊氣體裝置技工執行，而該技工已於相關的氣體工程類別註冊及受聘於註冊氣體工程承辦商。

For Use in Hong Kong

Attention ! According to the Gas Safety Ordinance of Hong Kong, any gas installation works including the installation of appliances and connection tubing, must be undertaken by registered gas installers who are registered for that appropriate classes and be employed by registered gas contractors.

安裝後之檢查

Inspection after installation

● 檢查項目表 Check List

項目 Items	內容 Content
氣體種類 Gas type	所用之氣體是否熱水爐上標貼所標明的氣體? Does gas type used correspond to the one specified in the specification label on the heater?
電源(電壓/頻率) Power supply(voltage/Frequency)	所供應的電源是否熱水爐上標明的電源(AC220V/50Hz)? Does power supply correspond to the one described in the specification label(AC220V/50Hz)on the heater?
與易燃物品的距離 Distance from inflammables	熱水爐與易燃物品的距離是否足夠?是否有適當防火措施? Is there enough distance between the heater and inflammables?Are appropriate measures taken for fire prevention?
安裝的條件 Conditions of installation	熱水爐與窗口及障礙物品的距離是否足夠? Is there enough distance between heater and windows or obstacles?
維修空間 Maintenance space	是否有足夠空間供檢查及維修工作。 Is there enough space for inspection and repair work?
煙管系統 Flue system	熱水爐的煙管系統是否正常工作? Is the heater installed where the flue system work properly?
安裝(水平地) Installation(level with ground)	熱水爐是否水平安裝? Is the heater installed level with ground?

供水及熱水管道系統 Water supply and hot Water piping system	你是否開啓主水閥門來測試有沒有水供應? Did you check water supply by opening main water valve?
	濾水器內是否有雜物? Is there any foreign material in the water filter?
	水管接駁位有沒有漏水? Is there any water leakage at water connection?
氣體管道系統 Gas piping system	氣體管道是否安裝妥當? 是否有氣體洩漏? Is gas piping system installed properly? Is there any gas leakage?
電力安裝 Electric work	電力安裝是否跟指示進行? Is electric work completed in accordance with instructions?
	地綫是否緊固接駁? Is grounding connection firm?

給註冊氣體裝置技工 To Registered Gas Installer

安裝熱水爐必須遵照本安裝手冊之要求以確保熱水爐安全操作。

若不遵照本安裝手冊之要求，將會收取熱水爐維修費。安裝完成後須將安裝手冊給與用戶。

Installation of the heater must comply with this manual for safety operations.



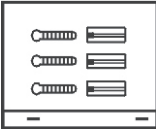
If the installation does not comply with this manual, repairs required to fixing heater will be charged. Make sure to give this manual to user after installation is completed.

給用戶 To user

此熱水爐是家用式。請勿作為商業用途(如酒樓...等)

This heater is for domestic use. Do not use it for commercial purposes (restaurant, etc.)

配件 Accessories

零件名稱 Parts name	外觀 Appearance	數量 Quantity
使用說明書 Operation manual		1
安裝手冊 Installation manual		1
螺絲 Screws		1

安全指示


Safety instructions


必須嚴格遵照以下項目以避免用戶或他人受到傷害及財物受到損壞。

The below listed items shall be strictly followed to prevent user and other people from suffering an injury and to prevent your property from being damaged.

■ 當不遵照“注意事項”而發生意外，表示受傷及破壞之程度的標誌如下。

The below markings show the level of injury and damage caused when cautions are not followed.

 **警告** 項目有此標誌表示可能會有生命危險及嚴重受傷。
WARNING This marking is labeled on those items that any death or a serious injury is expected.

 **注意** 項目有此標誌表示可能會有受傷及財物受到破壞。
CAUTIONS This marking is labeled on those items that any injury and material damage is expected.

■ 以下標誌會用於安裝手冊。

The below listed markings are used in the installation manual.

 此標誌表示須提高警覺。
This marking is given to those items to call your attention.

 此標誌代表這些項目必須確實遵從。
This markings is given to those items to be strictly followed.

熱水爐安裝標準 Standards for heater installation

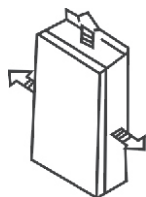
■ 熱水爐安裝必須遵照當地的條例，標準，法例及指引。

Installation must comply with local laws, standards, regulations and guidelines.

警告 WARNINGS

確定熱水爐安裝位置旁的牆壁及屋頂是由防火物料製造及與熱水爐之間有足夠距離達到防火效能。

Confirm that walls and ceiling where heater is installed are made of the fire preventive materials and that enough distances between heater and walls and ceiling are secured for fire prevention.



詳細請睇P. 4
For details, Please visit P.4

若沒有足夠距離，可能導致火警。
If not enough distances, a fire may be caused.

安全指示

Safety instructions

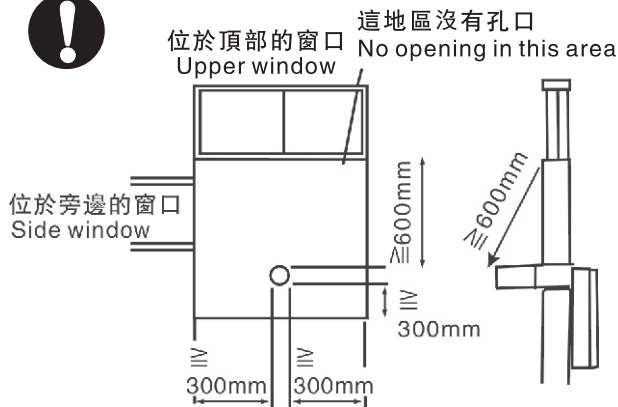


警告

WARNINGS

- 確定熱水爐安裝位置四周沒有窗口。
(若有窗口, 熱水爐須與窗口保持足夠距離。熱水爐頂之窗口: 超過600毫米, 熱水爐旁之窗口: 超過300毫米)

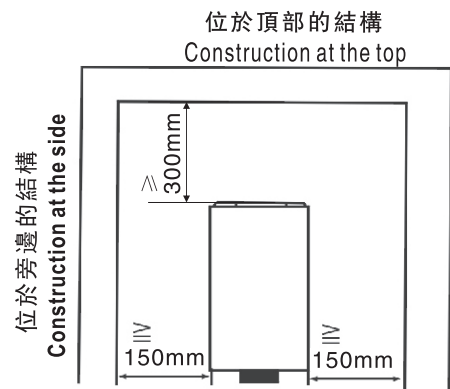
Make sure to install heater where there is no window around the heater.
(If there is a window, make sure to secure enough distance between heater and window.
Window above heater: more than 600mm
Window at side of heater: more than 300mm)



若廢氣回氣入室內, 可能導致產生有毒一氧化碳。
If the exhaust air returns inside the room, a carbon monoxide toxication may be caused.

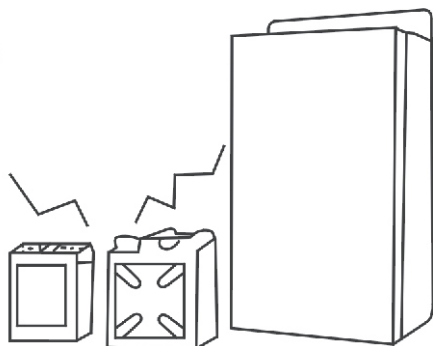
- 確定熱水爐與易燃物品之間有足夠距離, 如下述。

Make sure to secure enough distance between heater and inflammables as described below.



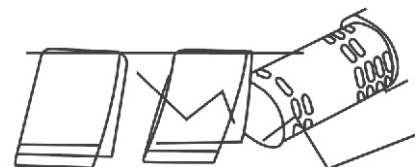
若足夠距離不能維持, 熱水爐或結構材料會因受熱而導致火警。
If enough distance is not secured, heater or construction materials may be heated to cause fire.

- 切勿安裝熱水爐在使用易燃物品之地方, 如汽油、苯、火水及黏合劑。
Do not install the heater where, inflammables including gasoline, benzene, kerosene and glue are used.



可能導致火警。
A fire may be caused

- 切勿安裝煙管在可燃物品附近, 如衣物。
Do not near flammable things install the flue, such as clothing.

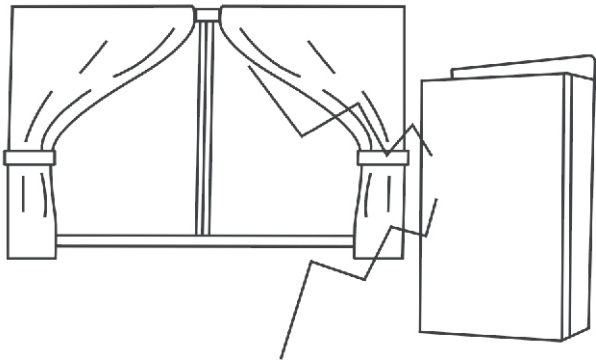


可能導致火警。
A fire may be caused

安全指示

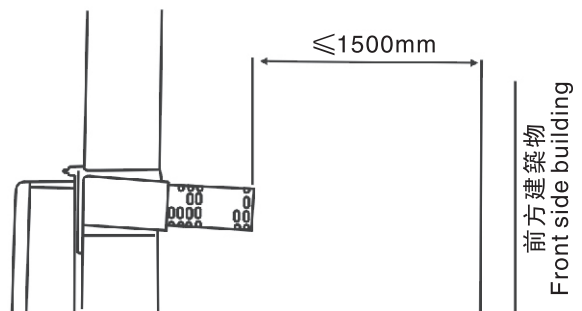
Safety instructions

切勿安裝熱水爐在有可燃物品的地方，如窗簾及傢俬。
Do not install heater where combustible materials like curtains and furniture are installed.



可能導致火警。
A fire may be caused.

排煙管前面需與障礙物保持1500毫米，若不能達到，切勿安裝。
Do not install the flue when there is any obstacle (wall, etc) within 1500mm in front of the flue duct.



廢氣回流可能導致不正常燃燒而引致火警。
Abnormal combustion may take place by returned exhaust air to cause fire.

切勿使用非熱水爐上標貼所標明之電力(伏特/頻率)及氣體供應。
Do not use gas and power supply (voltage/frequency) other than specified in the specification label on heater.



若使用其它電力及氣體，熱水爐可能不正常操作，而不正常燃燒可產生有毒一氧化碳及可能導致火警。
If other type of gas and electricity is used, heater may not operate properly and carbon monoxide toxication and fire may be caused by an abnormal combustion

煙道必須密氣及安裝穩固。
Flue duct must be airtight and firmly fixed.

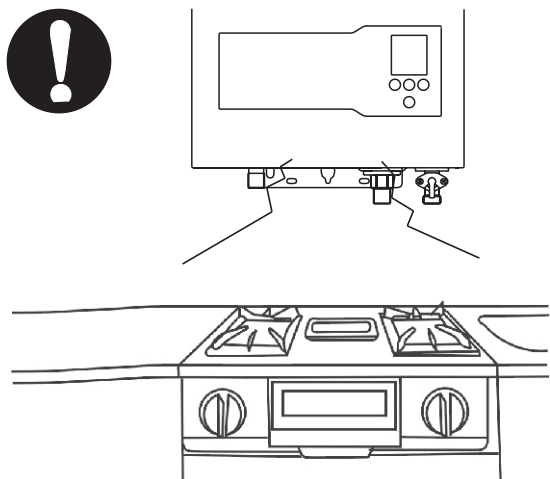


若煙道安裝不妥當，廢氣可能回流室內或煙道不能正常操作而導致不正常燃燒，缺氧或產生有毒一氧化碳可能發生。
If the flue duct is not installed properly, exhaust air may return into the room or flue system may not work properly to cause an abnormal combustion. A oxygen depletion or a carbon monoxide toxication may be caused.

安全指示

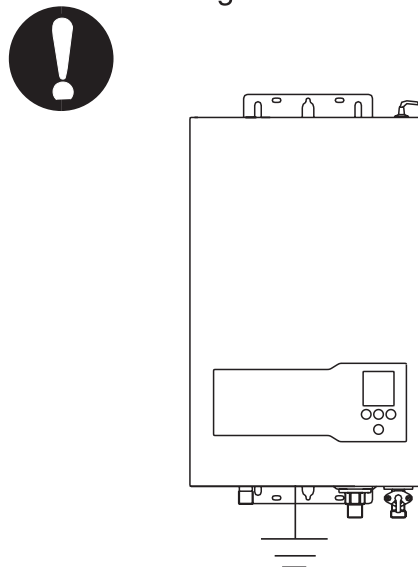
Safety instructions

- 切勿安裝熱水爐在煮食爐具頂部。
Do not install the heater above cooking appliances.



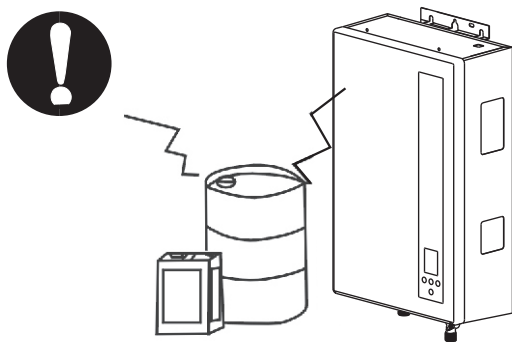
煮食爐具的廢氣及油膩物質可能損壞熱水爐。
The heater may be damaged by exhaust air and oily materials produced by cooking appliances

- 確定熱水爐已接地。
Make sure to ground the heater.



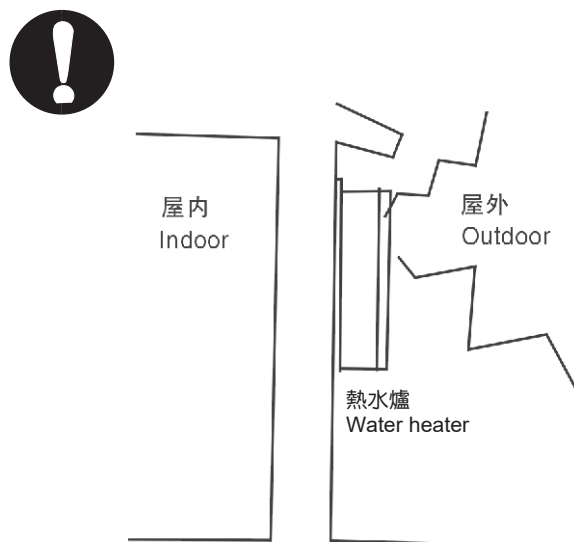
漏電可能導致觸電。
Any electric leakage may cause an electric shock.

- 切勿安裝熱水爐在使用特別化學物品的地方，如一般洗衣工場及工廠所使用的氨，硫磺及酸等。
Do not install the heater where special chemicals are used such ammonia, sulfur, acidic materials, etc., which are generally used at laundry and factory.



氯氣混合物對人體有害及損壞熱水爐。
A corrosive gas produced by chlorine compound is harmful to human body and the heater may also be damaged.

- 熱水爐切勿安裝於室外。
Do not install the heater outdoor.



安全指示

Safety instructions

❗ 安裝必須由專業註冊氣體裝置技工執行。
Installation must be done by a Registered Gas Installer.

❗ 安裝煙管時，確定煙管不會滑出其位置。
When the flue duct is installed, make sure that flue duct will not slip out of position.

若廢氣回流入室內，可能導致缺氧或產生有毒一氧化碳。

If exhaust air returns into rooms, an oxygen depletion or a carbon monoxide toxication may be caused.

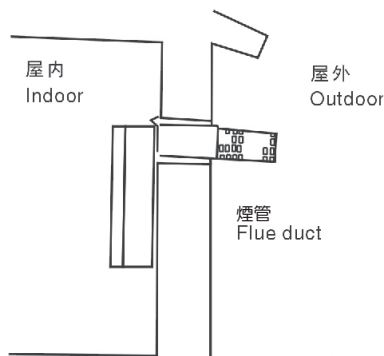
❗ 確定使用生產商指定之煙管。
Make sure to use the flue duct specified by the manufacturer.

若使用不是生產商指定之煙道，煙管安裝不妥當，廢氣可能回流室內或煙道不能正常操作而導致不正常燃燒，缺氧或產生有毒一氧化碳可能發生。
If using a flue which is not specified by the manufacturer, or the flue is not installed properly, exhaust air may reflux into room, and the flue may not operate properly, this cause abnormal combustion. Hypoxia and carbon monoxide toxication may be caused.

❗ 確定安裝煙管面向室外。
Make sure to install the flue duct so that the duct faces outdoor.

若廢氣回流入室內，可能導致缺氧或產生有毒一氧化碳。

If exhaust air returns into rooms, an oxygen depletion or a carbon monoxide toxication may be caused.



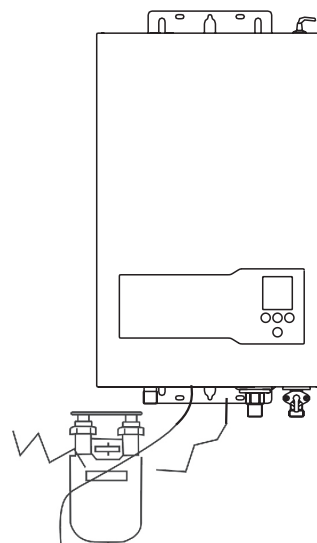
❗ 熱水爐切勿安裝在煮食器皿及食物上面。
Do not install the heater above cooking utensils and foods.

當熱水爐殘舊時，鐵銹及煤粒可能脫落。
Rust and soot may fall off from the heater when it becomes old.

❗ 切勿將熱水爐安裝在車輛或船上。
Do not install the heater on vehicles and vessels.

❗ 切勿將電源綫接駁在氣體喉管上。
Do not connect electrical wirings to the gas piping.

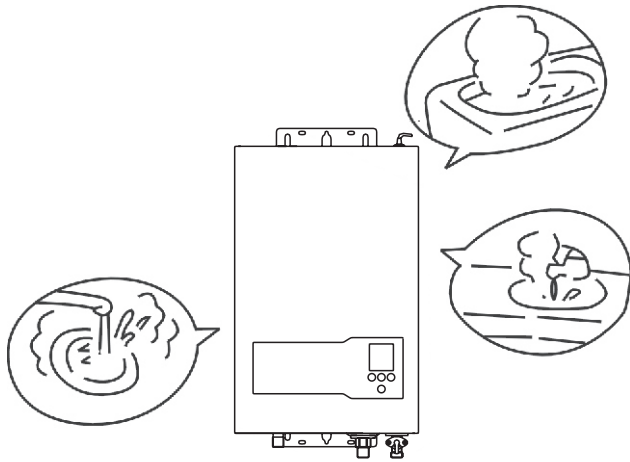
漏電可能導致觸電或火警。
An electrical leakage may cause an electrical shock or a fire.



安裝注意事項

Cautions for installation

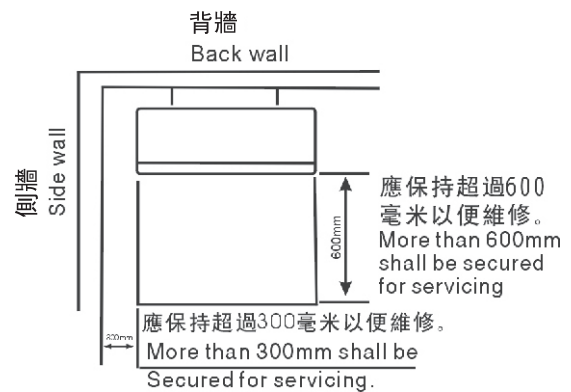
- 安裝熱水爐在常用熱水附近的地方。
Install the heater near where hot water is frequently used.



若安裝較長的熱水喉管，熱損失將會較大。
If hot water piping becomes longer, the thermal wastage becomes greater.

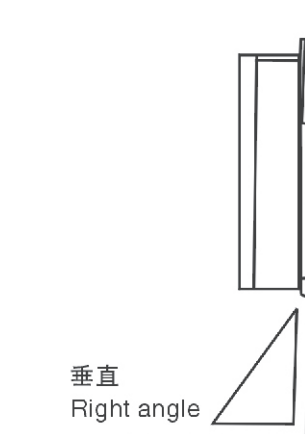
- 確定有足夠空間供檢查及維修工作。
(距離熱水爐前面超過600毫米及四周超過300毫米)

Make sure to secure enough space for inspection and service.
(more that 600mm in front of the heater and more than 300mm at sides.)



若不是，維修工作可能不能進行。
If not, service and maintenance work may not be carried out.

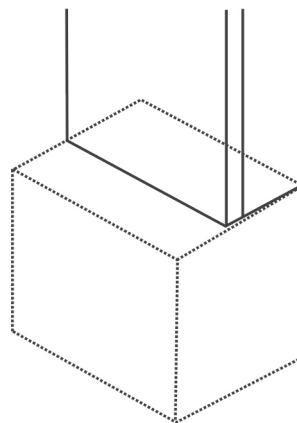
- 確定熱水爐安裝在垂直的牆身。
Make sure to install the heater on a vertical wall.



若不是，不正常燃燒可能產生。同時排水來防止結冰也困難。
If not, an abnormal combustion may be caused. It is also difficult to drain water for freeze prevention.

- 確定熱水爐底部有足夠空間供喉管安裝及排水用。

Make sure to secure enough space under the heater for piping installation and water draining.



若不是，維修工作可能不能進行。
If not, service and maintenance work may not be carried out.

安裝注意事項

Cautions for installation

- 安裝熱水爐的牆身必須能夠承擔15公斤重的熱水爐。

The wall on which the heater will be installed must be strengthened so that 15kg heater can be mounted.

若不是，熱水爐可能跌下來。
If not, the heater may fall down.

- 確定使用軟管接駁冷熱水位以便日後維修。

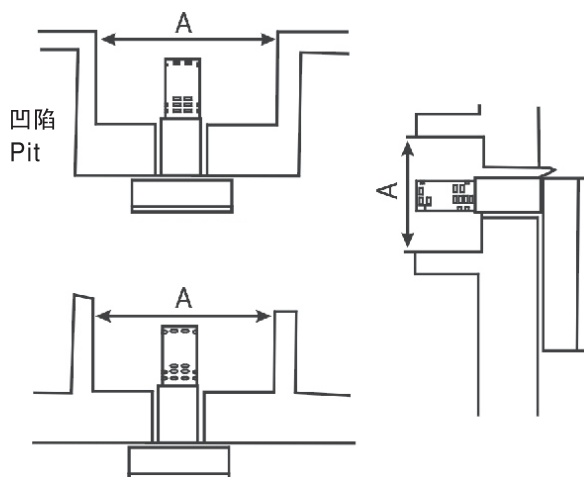
Make sure to use flexible pipe for hot and cold water connections so that repair work will be carried out smoothly.

- 確定煙管四周800毫米內沒有障礙物阻礙通風。

Make sure that there is no obstacle within 800mm from the flued duct, which disturbs air flow.

- 熱水爐切勿安裝在空氣不流通的坑道內。
Do not install the heater in a pit where air flow is disturbed.

若“A”的距離多過1500毫米，是可接受的。
It is acceptable if the distance “A” is longer than 150cm.



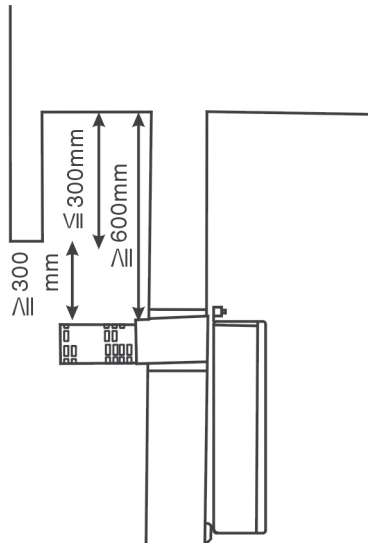
安裝注意事項

Cautions for installations

若不能維持足夠距離，空氣吸入及廢氣排出系統可能不能正常運用而引致不完全燃燒。
If the enough distance is not secured, the air intake and exhaust system may not work properly to cause the incomplete combustion.

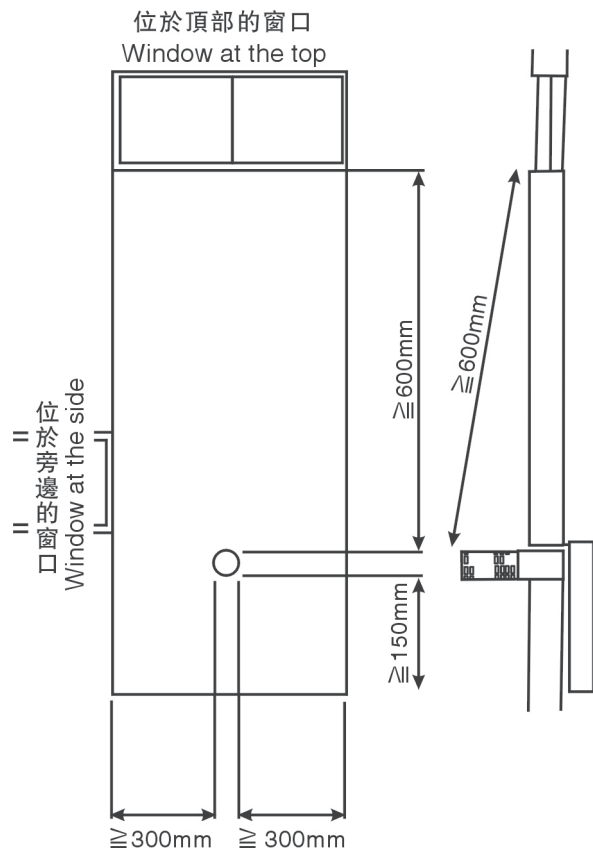
■ 於熱水爐及煙管頂上600毫米沒有障礙物的地方安裝。

Install the heater where there is not obstacle within 600mm above the heater and the flue duct.



■ 下列為煙管與開口位之間最低限度距離以免廢氣回流。

The minimum distance between the flue duct and openings where exhaust air may flow in must be kept as described below.



尺寸

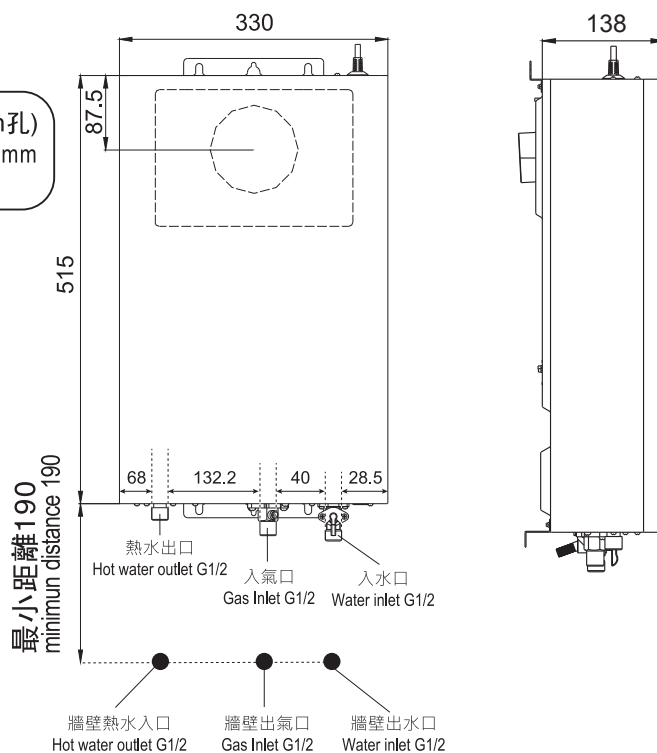
Dimensions

單位: 毫米
Unit:mm

Giw-218S(TG)

排氣出口/空氣入口(請在牆上開130mm孔)
Exhaust outlet/Air-intake(Please open a 130mm hole onto the wall)

背排(Back Flue)



熱水爐安裝

Heater installation

■ 煙管安裝指引

Instructions on flue duct installation

1. 確定煙管安裝是否符合下列要求。

Make sure to confirm whether flue duct installation meets the below requirements

● 煙管是否面向室外？

Is flue duct facing outdoor?

● 煙管孔道是否有防火結構？

Does flue duct hole on the wall have a fire preventive construction?

2. 安裝熱水爐必須沒有傾斜。

The heater must be installed without any inclination.

■ 背排式熱水爐安裝步驟

Back flue installation procedure of the heater

1. 決定安裝熱水爐之位置

按右圖的尺寸圖，在牆上開一個130-140毫米的孔，在牆上鑽6個8毫米的孔，其中上面四個孔是安裝背板，並把下面兩個孔打入膠塞，（下面二個孔是固定熱水爐底碼）

Decide the position of installing the heater.

Refer the right side drawing, cut a hole diameter 130-140mm according to the position shown on the cutting board. Drill 6 holes with diameter 8mm in the wall, 4 of which on upper position are for the back board. Please insert rubber pin into the lower two holes which are for positioning the heater

2. 背板上距離140毫米的兩螺栓是連接熱水爐

The two bolts with distance 140mm on the back board are for connecting the heater

3. 把給排氣管穿入背板內接好

注意：給排氣管於安裝時必須向下傾斜，以防止雨水從排氣管滲入熱水爐

Mount the flue terminal onto the back board

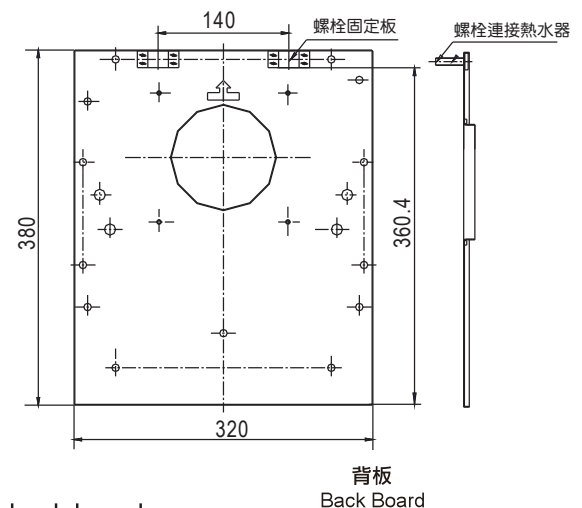
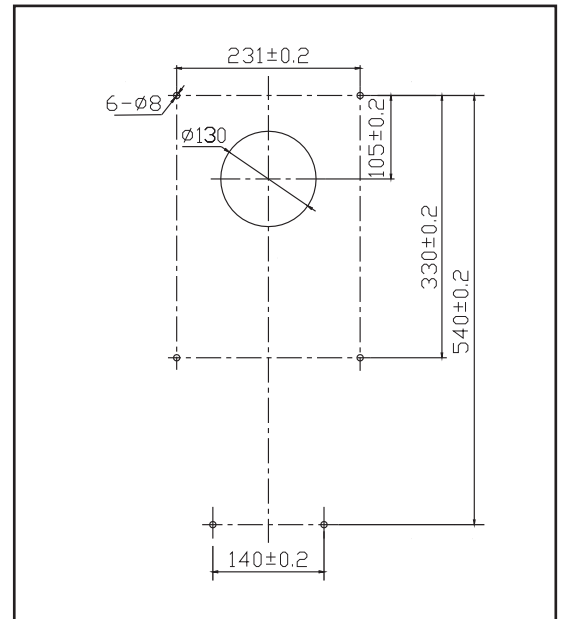
Note : The flue terminal has a downward inclination when installed
(The flue has to be installed downward, to prevent the rain drops into the flue)

4. 把熱水爐掛在背板上的兩枚螺栓上，用絲母收緊，另用螺絲把底碼收緊在牆上

注意：安裝時必須確定熱水爐之排氣口已套入背板內

Hang the heater onto the bolts of the back board and fix it with nuts. Fix the lower bracket with screws onto the wall

Note : Make sure the exhaust port of heater is interted into the back board.



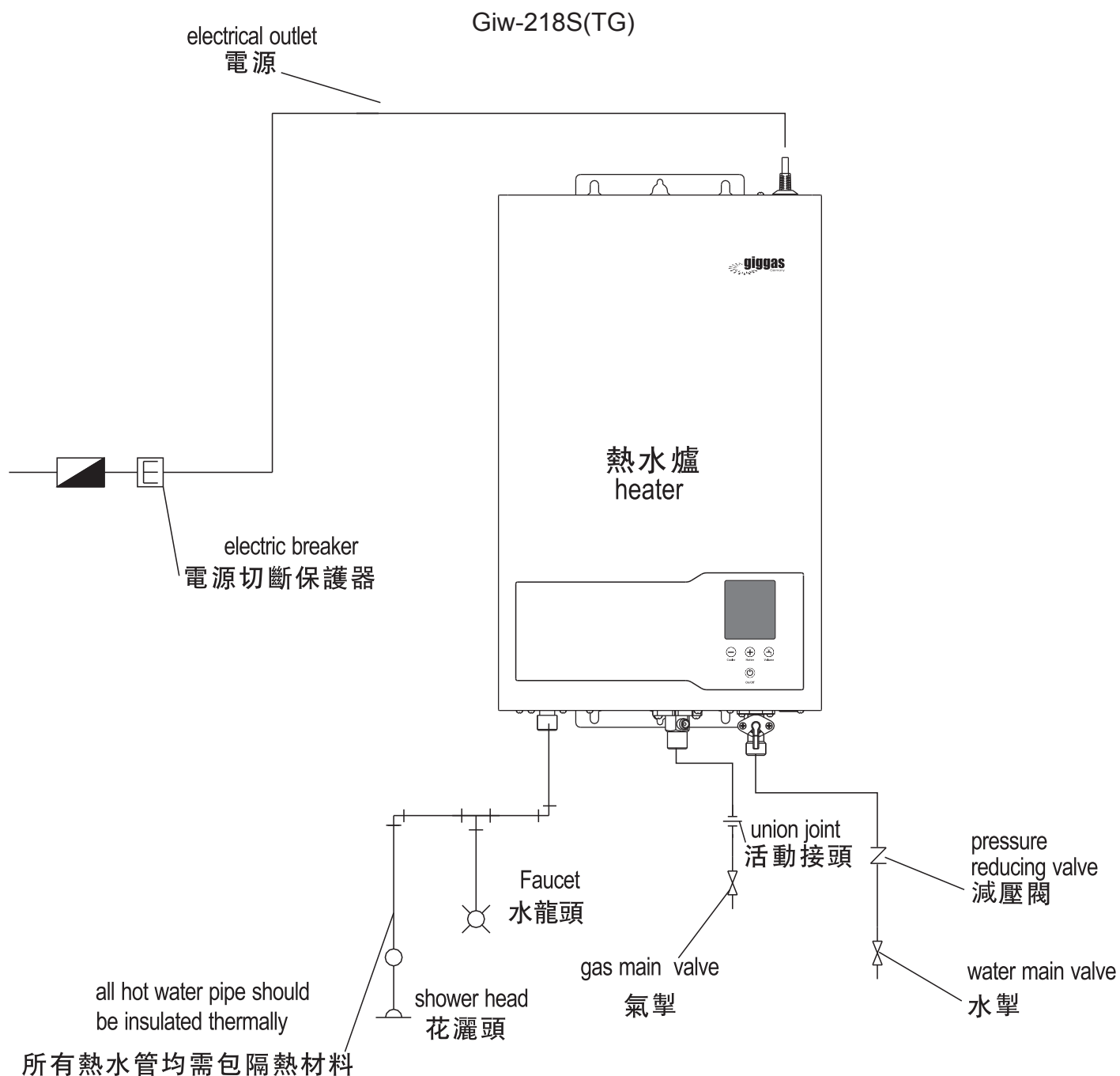
■ 更換原有之對衡式熱水爐

1. 關閉冷水來水掣及氣掣
2. 打開熱水龍頭及熱水爐的排水閥，將原有熱水爐內之水排去
3. 拆除原有所有連接喉管，熱水爐及排煙管及背板
4. 與新安裝相同

■ Replacement of existing balanced flue heater

1. Close the cold water supply valve and gas supply valve
2. Open the hot water faucet and the drain cock of the heater to drain the water inside the existing water heater
3. Dismantle the existing connecting piping, water heater and flue terminal and back board
4. same procedures for new installations

■ 安裝範例 Example of Installation



■ 測試操作

- 當完成安裝之後，依照以下的步驟試爐
- 注意：
 1. 測試操作前，一定要確定以下幾點：
 - a. 熱水爐/排煙管與易燃物體之間的距離是否足夠？
 - b. 熱水爐四周環境的情況是否妥當？
 - c. 熱水爐的四周是否留有足夠空間以方便維修？
 - d. 是否已經達到安裝要求？
 2. 檢查水管。
開水掣及熱水龍頭，確定有水供應，並留意是否有漏水。
 3. 用鹼水或洗潔精塗在氣喉接駁處，檢查是否有洩漏氣體。
 4. 檢查地綫是否導電性能良好。
 5. 檢查爐面板是否已上緊。

■ TRIAL OPERATION

- After the installation is completed, carry out trial run following the below procedures.
- CAUTIONS:
 1. Confirm the following points before trial operation.
 - a. Is there enough distance between the heater/exhaust pipe and inflammable??
 - b. Is ambient condition for the heater all right??
 - c. Is there enough servicing space around the heater? ?
 - d. Are the installation requirements satisfied??
 2. Confirm the water pipings.
Open the water main valve and hot water faucet and confirm that water is flowing out from the faucet. Also confirm whether there is any water leakage.
 3. Confirm whether there is any gas leakage by applying soap sud or detection solution to piping connections.
 4. Confirm whether grounding is correctly conducted.
 5. Confirm whether the front panel is firmly screwed.

規格

Specifications

產品 Product		氣體熱水爐 Gas water heater
型號 Model number		Giw-218S (TG) 香港煤氣 HK TG
系統 System	熱水供應 Hot water supply	多點式 Multi-points
	安裝及煙道 Installation & Flue	室內/強制對衡式 Indoor/Forced balanced flue system (背排 Back Flue)
點火 Ignition		電子連續點火 Electric continuous spark ignition
水壓 Water pressure	操作水壓 Operation water pressure	0.01–1.0Mpa(0.1–1kgf/cm ²)
	點火水壓 Ignition water pressure	0.02MPa(0.2kgf/cm ²)
尺寸 Dimensions	熱水爐 heater	高X寬X深 /H x W x D 515mmX330mmX138mm
重量 Weight	熱水爐 heater	10.5公斤(kg)
喉管接駁 Pipe connection	氣體 gas	半寸(1/2)喉牙 R1/2(G1/2)
	冷水 water	半寸(1/2)喉牙 R1/2(G1/2)
	熱水 hot water	半寸(1/2)喉牙 R1/2(G1/2)
電力供應 Power supply		AC220V (50Hz)
耗電量 Power Consumption		最大火力35W、35W at maximum combustion
安全裝置 Safety devices	漏電斷路裝置 Earth Leakage Circuit Breaker (15mA)	
	熄火安全裝置、防止過熱裝置、防止空燒安全裝置、電流保險絲、超壓洩壓閥 Flame failure device.Overheat prevention device. Empty combustion prevention device.Electric fuse.Pressure relief valve	
適用氣體 Gas type		煤氣(香港) Town Gas(HK) 氣壓 / Gas Pressure 1500Pa
額定熱負荷 Rated Heat Input	最大 Maximum	90 MJ/h(25kW)
	最小 Minimum	24 MJ/h(6.6kW)
出水量 (公升/分鐘) Hot water supply (L/min)	最多溫升25°C, +25°C Max temp increasing	12
	最少溫升25°C, +25°C Min temp increasing	4.2
	最多溫升40°C, +40°C Max temp increasing	7.5

參數變化，以實物為準，恕不另行通知。

The change of the parameter bases on the practicality,without prior notice.



上將工程有限公司
World Engineering Limited
www.giggas.com

香港九龍油塘茶果嶺道610號
生利工業中心3樓4號室
Room 4, 3/F, Sunray Industrial Centre.
No.610 Cha Kwo Ling Road,
Yau Tong Kowloon

電話Tel: (852) 2347 9278
傳真Fax: (852) 3529 1375